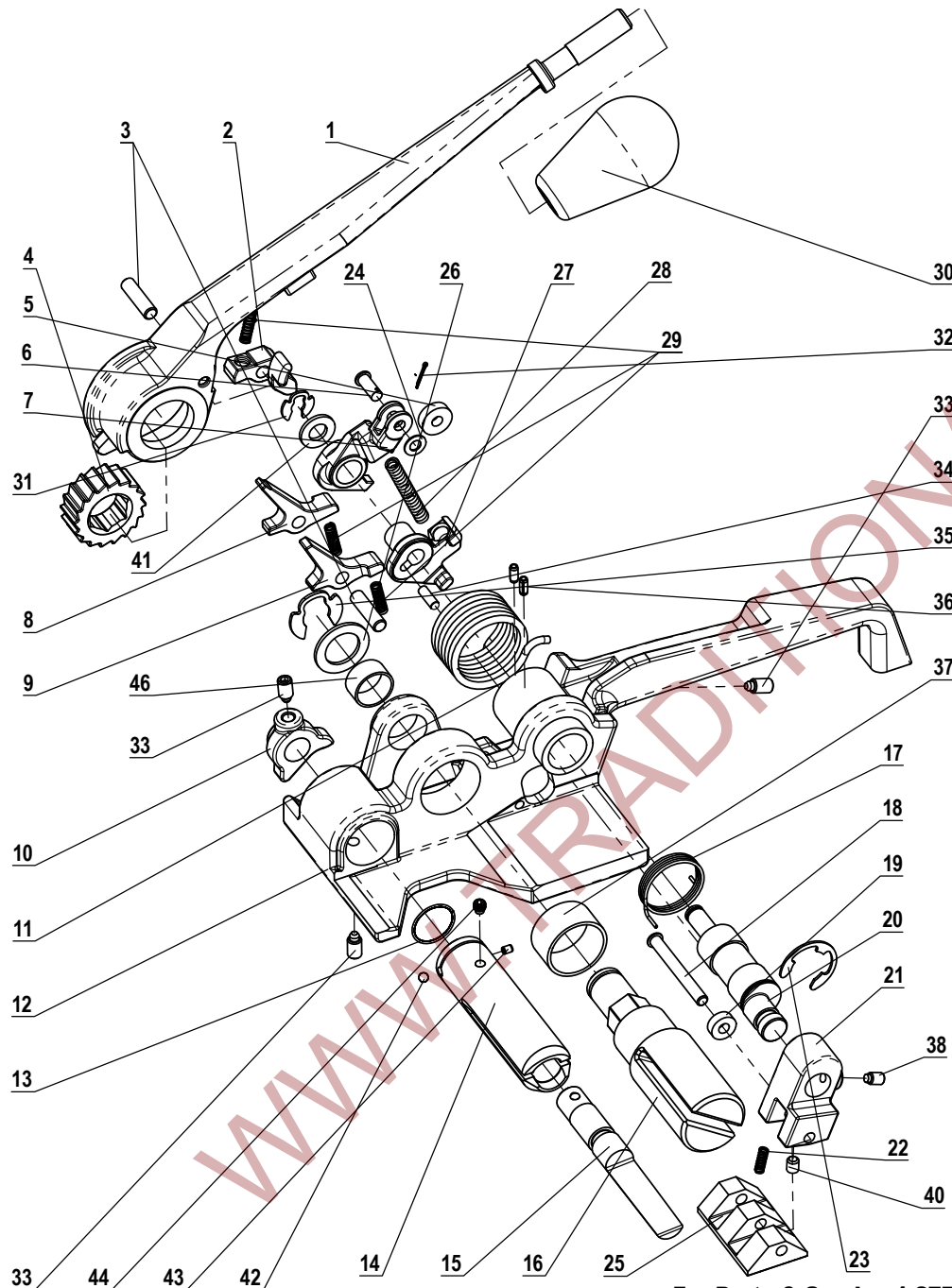


MUL-375

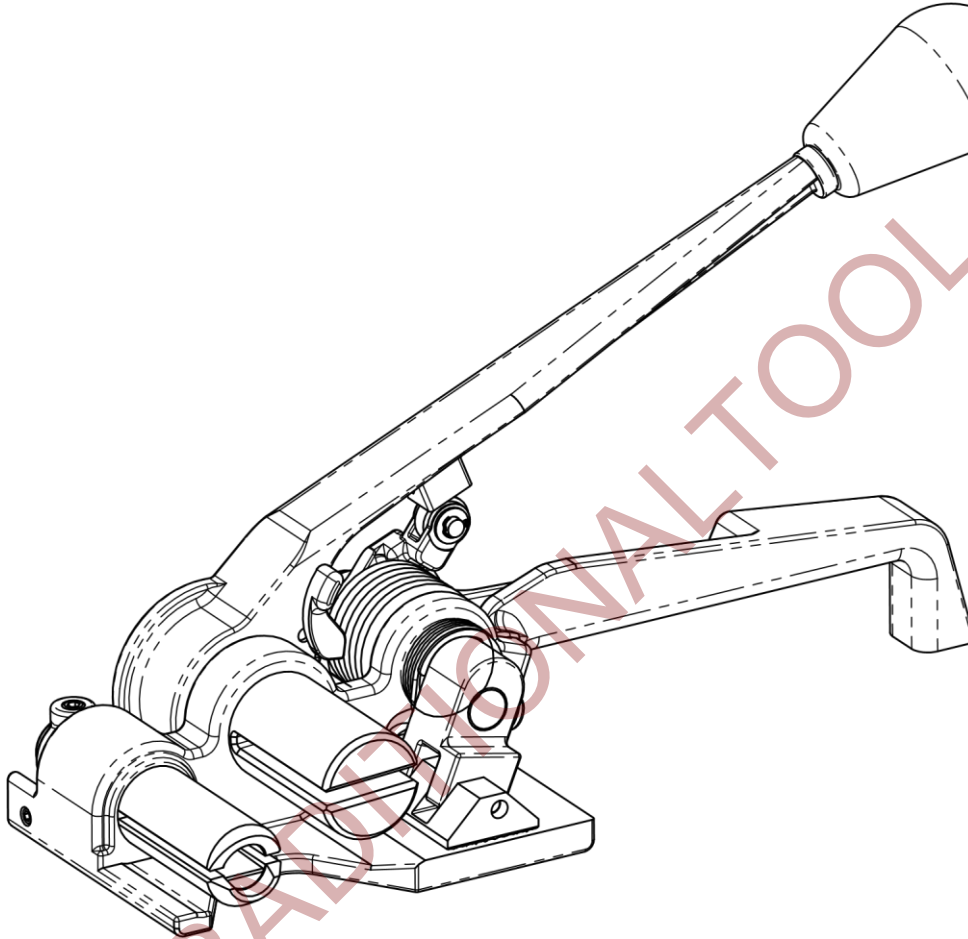
Heavy Duty Tensioner for Wide Cord



No	Part No	PART DESCRIPTION	QTY.
1	375-01	HANDLE	1
2	370-02	TENSION PAWL	1
3	370-03	PIN	2
4	370-04	RATCHET WHEEL	1
5	370-05	ROLLER	1
6	370-06	ROLLER PIN	1
7	370-07	LEVER	1
8	370-08	PAWL LONG	1
9	370-09	PAWL SHORT	1
10	370-10	CUTTER LEVER	1
11	370-11	LEVER SPRING	1
12	375-12	FRAME	1
13	375-13*	CUTTER SPRING	1
14	375-14*	CUTTER HOUSING	1
15	375-15*	CUTTER	1
16	375-16	WINDLASS	1
17	370-17	SPRING	1
18	375-18	GRIPPER FOOT SHAFT	1
19	375-19	GRIPPER FOOT ROLLER	1
20	370-20	ECCENTRIC SHAFT	1
21	375-21	GRIPPER HOLDER	1
22	370-22	GRIPPER FOOT SPRING	1
23	370-23	E RETAINING RING (3/4")	1
24	370-24	WASHER 5x11x0.7	1
25	375-25	GRIPPER FOOT	1
26	370-26	WASHER	1
27	375-27	AUXILIARY LEVER	1
28	370-28	AUXILIARY SPRING	1
29	370-29	PAWL SPRING	3
30	370-30	KNOB	1
31	370-31	KLIPRING 5/16"	1
32	370-32	COTTER PIN 1,2x8	1
33	370-33	SET SCREW M6x12 DOG POINT	3
34	370-34	NEEDLE ROLLER 4x11,8	1
35	370-35	KLIPRING 5/8"	1
36	370-36	SPRING PIN 1/8"x5/16"	2
37	370-37	PLANE BEARING	1
38	370-38	SET SCREW M5x8 HALF DOG POINT	1
40	370-40	SET SCREW M5x6	1
41	370-41	WASHER 8	1
42	375-42*	BALL 5/32"	1
43	375-43*	SPRING PIN 3x4	1
44	375-44*	HEXAGON SOCKET SET SCREW M5x5	1
46	370-46	PLANE BEARING SMALL	1

MUL-375 Tensioner for CORD

Operation Manual



Strap Type	Polyester (PET)
Strap Width	3/4" (19 mm) to 1 1/4" (32 mm)
Strap Thickness	All existing straps
Joint Type	Seal
Weight	6.5 lbs (3 kg)
Footprint	L: 4.75"; W: 3.5"
Handle Length	12"

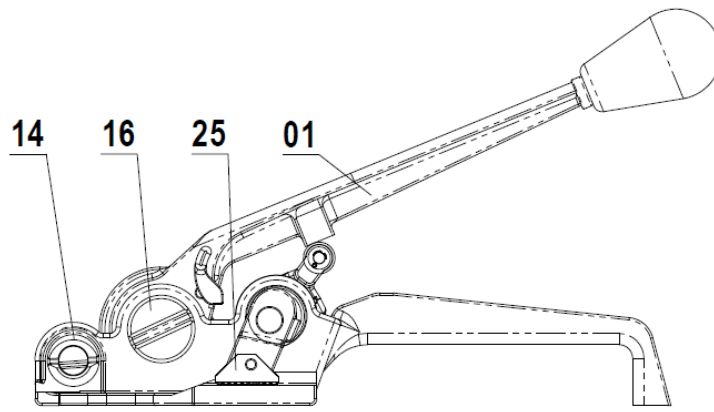


Fig. 1 – Starting Position

1. Wrap the strap around the package. Load one end of the strap into the **Buckle 100**. Load the other **End 102** into **Buckle 100**. Manually, take out the excess strap by pulling on **End 102**. Place the **MUL-375** approximately 10" out of the **Buckle 100** as shown on Fig. 2.

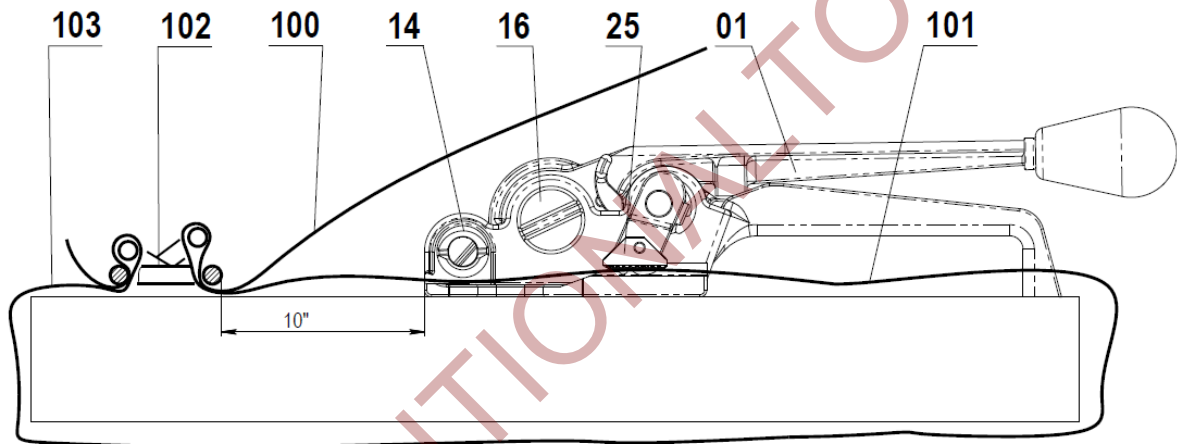


Fig. 2

2. Raise **Gripper Foot 25** by pressing down on **Tension Handle 01**. Load bottom strap **101** under **Cutter Housing 14**, under **Gripper Foot 25** and relies **Tension Handle 01**. Load upper strap **102** through **Cutter Housing 14**, through **Windlass 16** as shown on Fig. 3.

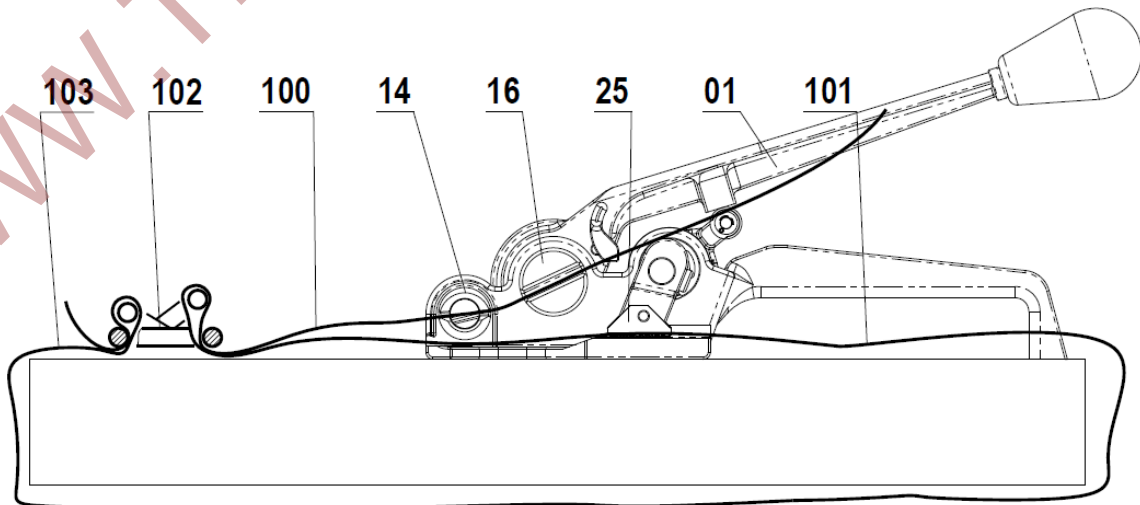


Fig. 3

3. Apply tension by ratcheting **Tension Handle 01** as shown on Fig. 4.

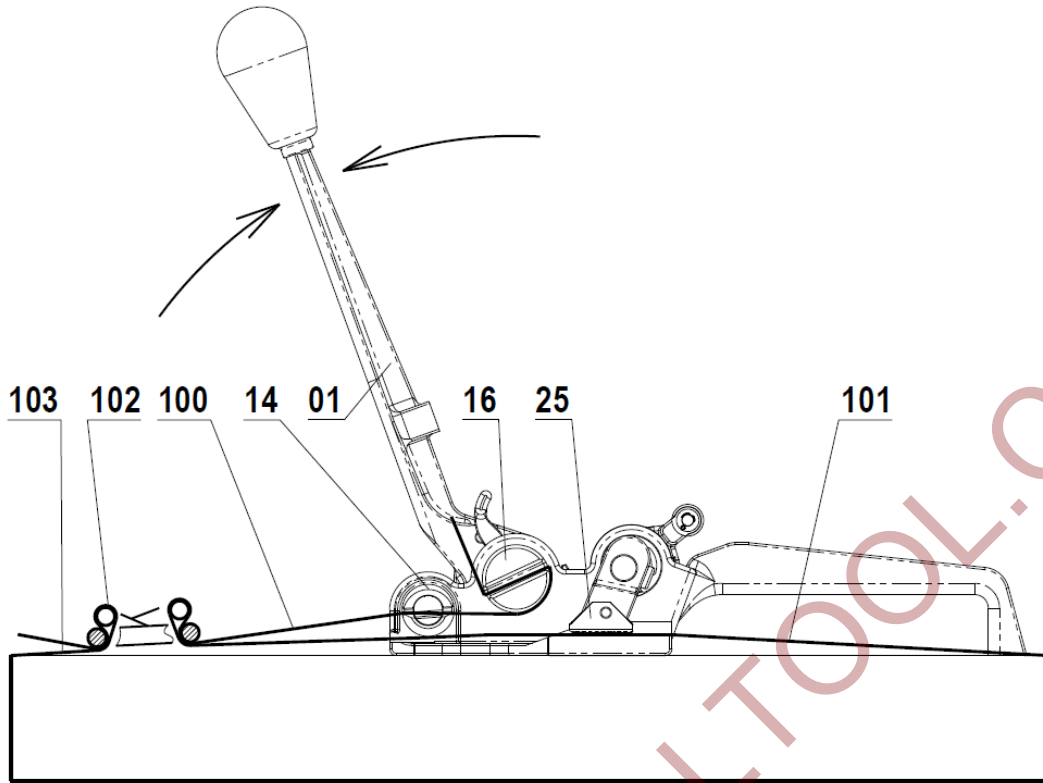


Fig. 4

4. Once satisfactory tension is achieved the strap is ready to be cut. Push down on the **Tension Handle 01** until the strap is cut and slide the tensioner to the right to release the strap from under the **Gripper Foot 25** as shown on Fig. 5. The operation cycle is now complete.

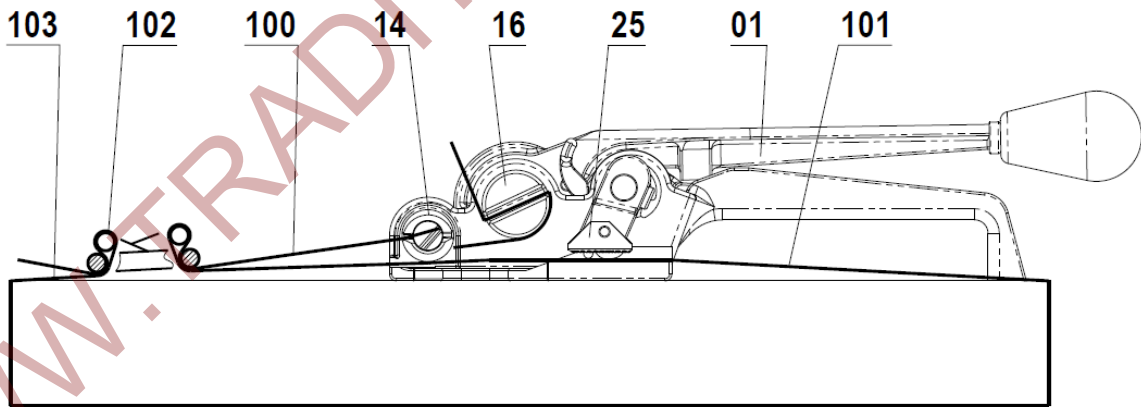


Fig. 5