


**MIP-380 STRAPPING TENSIONER  
DISASSEMBLY**







Tear down

A close-up photograph of a mechanical device, likely a keyboard component. The device has a red upper housing and a grey lower housing. A black cable is plugged into a port on the grey housing. A white text box with an orange vertical bar on the left side is overlaid on the bottom right of the image. The text inside the box reads: "Remove set screw 11A and spring 11B".

Remove set screw 11A  
and spring 11B



Set Screw & Spring

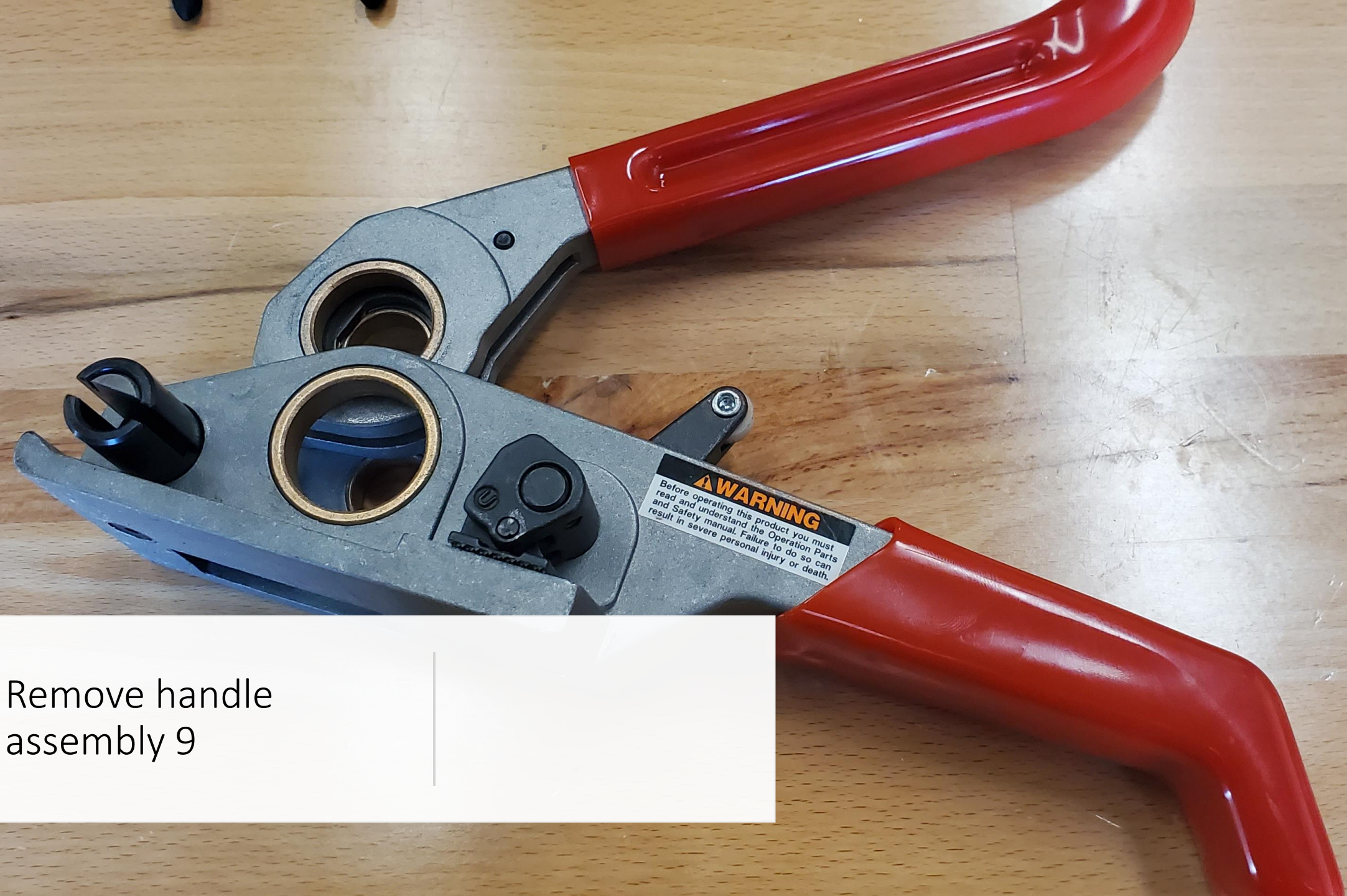


Remove circlip-  
windlass 19



Remove windlass 3

L  
re  
and  
resu



Remove handle  
assembly 9





Take note on the  
direction of toothed  
wheel



---

Clamp the release lever down to relieve tension on the gripper assembly

---

Before operating this product you must read and understand the Operation Parts and Safety manual. Failure to do so can result in severe personal injury or death.

Remove roll pin 15





Rotate release lever  
to align the opening  
in the bottom with  
the roll pin in  
release lever

---





Remove roll pin 15  
from the release lever



Remove  
Gripper Pin 2H

---



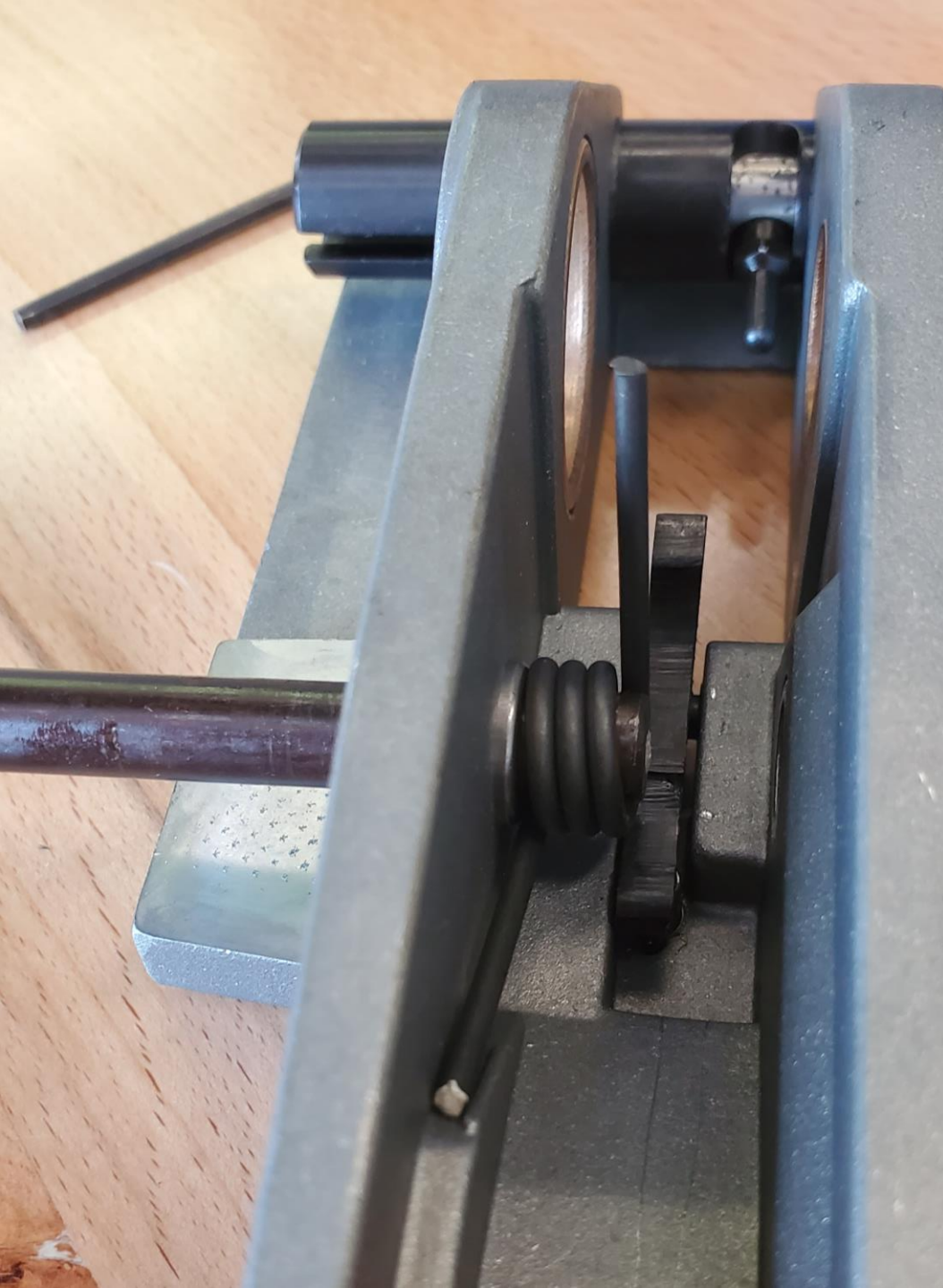


Assembly





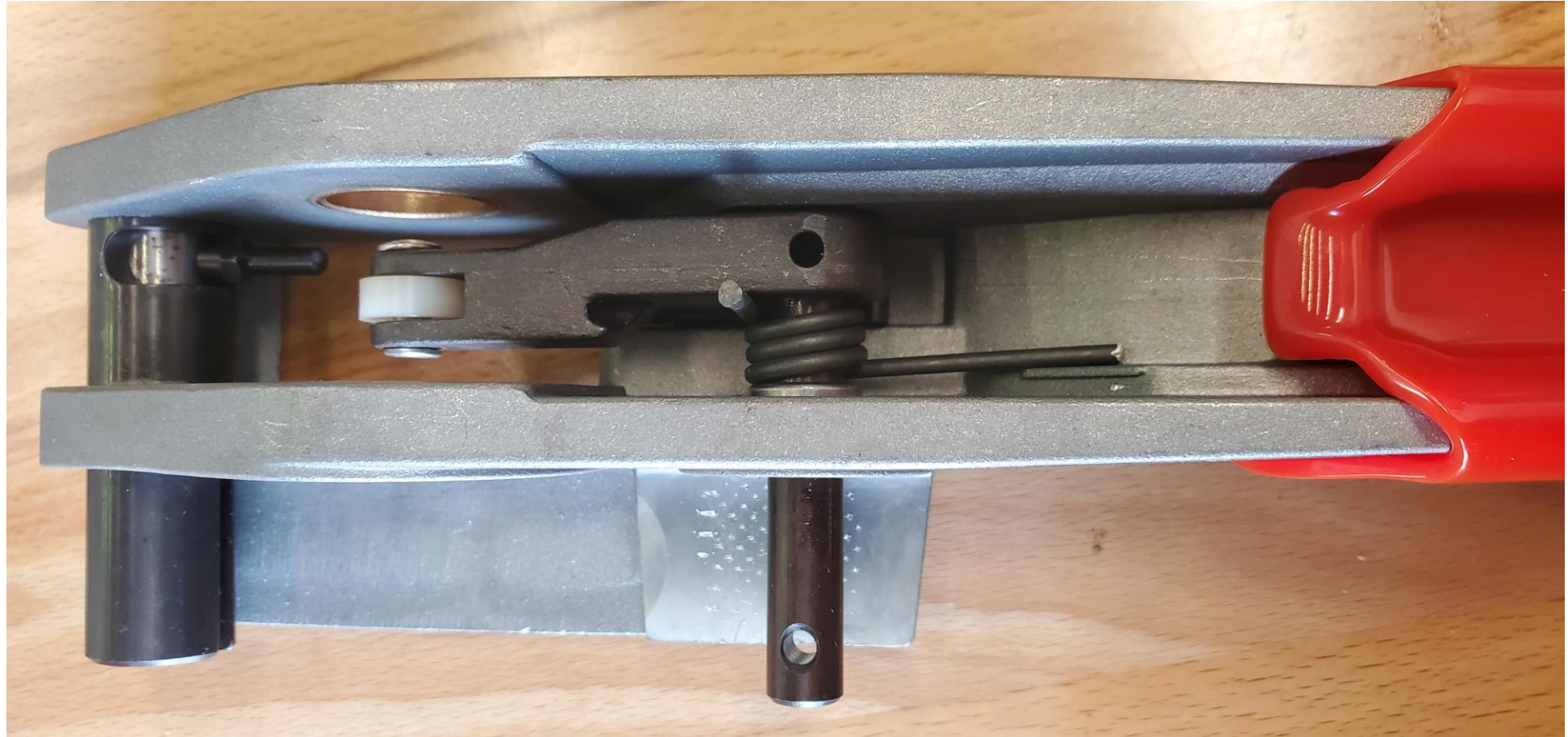
Insert gripper pin 2H  
with the shorter side on  
the gripper side of tool  
(as pictured)



Insert a small amount of  
the pin through tool

slide the spring onto  
exposed pin inside tool

Insert release lever and slide pin 2H through  
Align hole for roll pin & install





Clamp release lever  
down

# Reinstall gripper assembly and roll pin





Be sure the pawl  
is in its resting  
position at the  
top of the handle



Reinsert toothed  
gear into handle  
facing the proper  
direction

With the tool on its side, insert the handle assembly





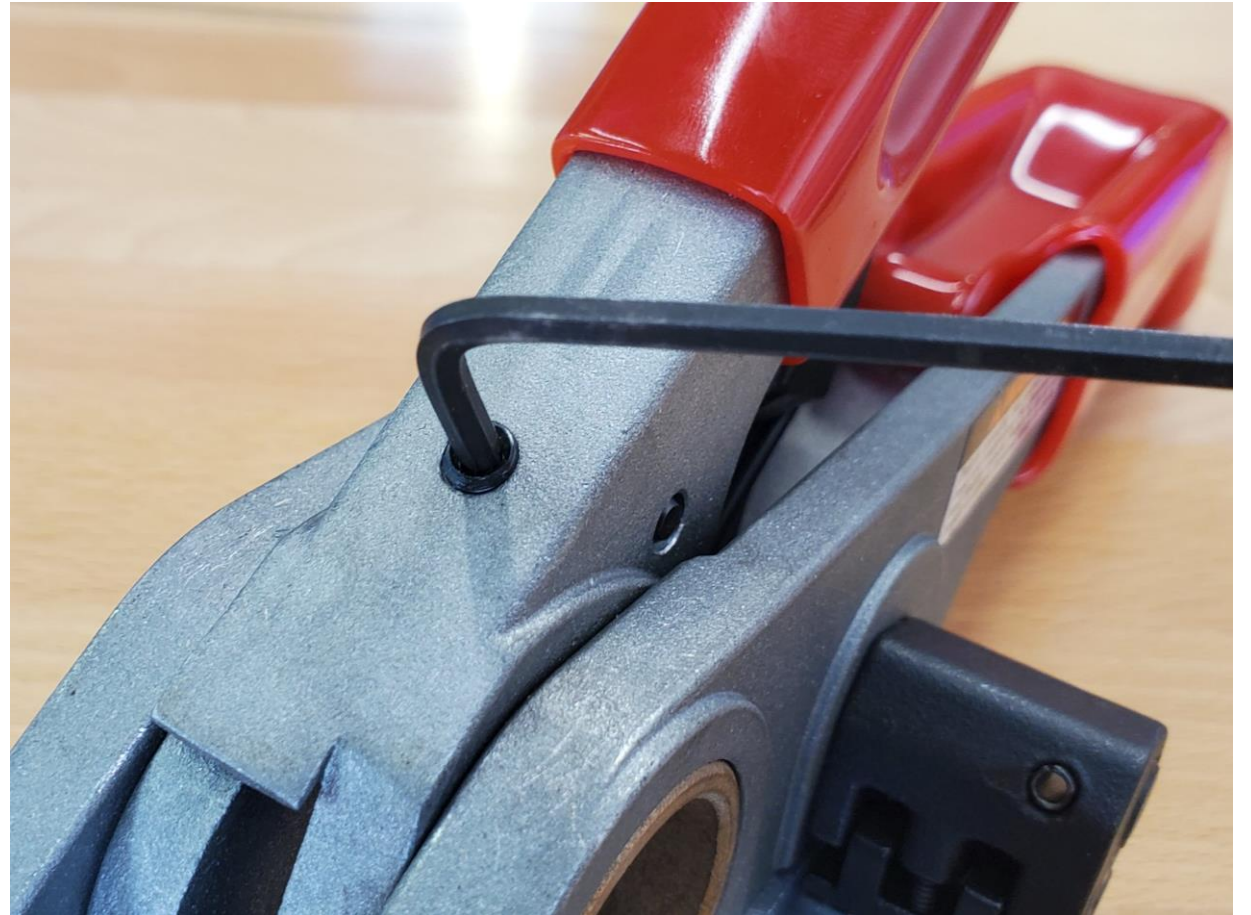
Reinsert the windlass into the tool  
align the flat spots on the windlass with the  
toothed wheel





reinstall circlip

Reinstall the spring and set screw in handle assembly





# HINTS / TIPS

FLAT EDGE



BEVELED EDGE



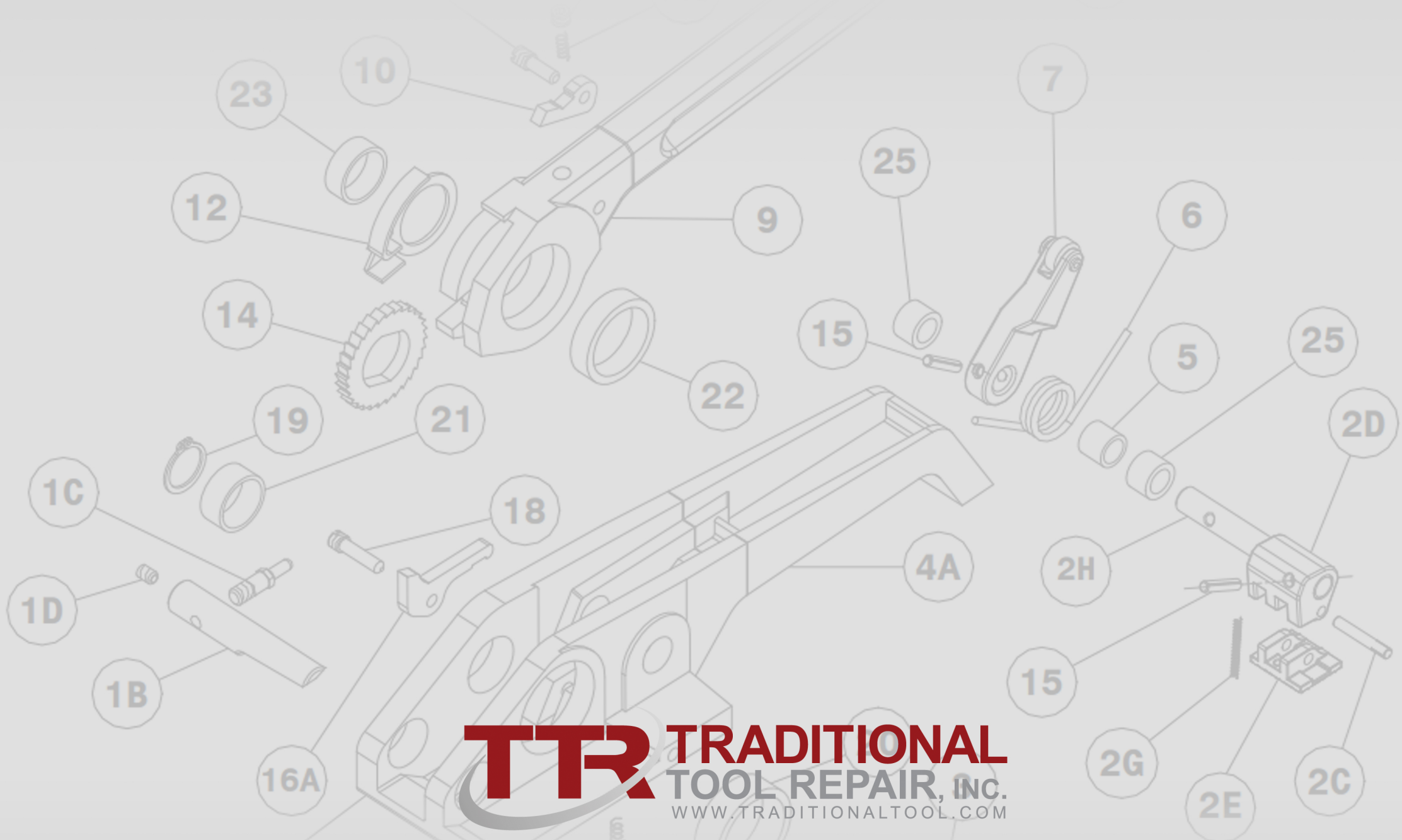
The beveled edge of the toothed wheel  
Will be the side the windlass slides into



Use a zip tie to hold the release lever  
assembly down when removing roll  
pin 15 from the gripper assembly



Lightly press roll pin 15 into  
release lever (AS PICTURED) when  
assembling the tool



**TTR** **TRADITIONAL**  
TOOL REPAIR, INC.  
WWW.TRADITIONALTOOL.COM

5508 ELMWOOD AVE STE 311 INDIANAPOLIS, IN 46203 • LOCAL (317) 784-4795 • TOLL FREE (877) 862-6699